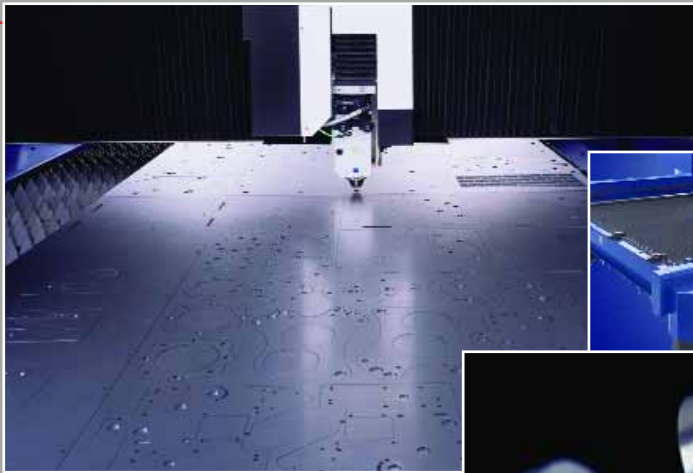




## LASER CUTTING



- HIGH SPEED LASER CUTTING

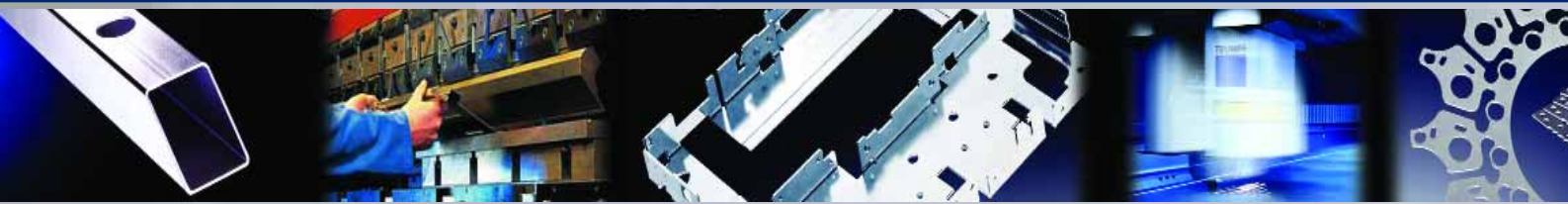
- FAST PROCESSING FOR RAPID TURNAROUND

- CAPABLE OF CREATING INTRICATE HOLES & DETAIL

- CLEAN CUTTING OF STAINLESS STEEL, ALUMINIUM & MILD STEEL

- MAXIMUM SHEET UTILISATION FOR LOWER UNIT COST

- ZERO TOOLING COSTS



## TUBULAR LASER CUTTING

- ROTARY AXIS TUBULAR LASER CUTTING

- ROUND, RECTANGULAR & SQUARE SECTIONS PROCESSED



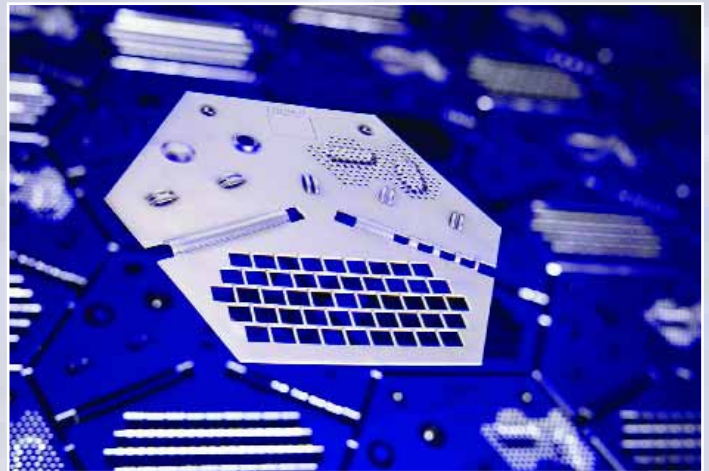
- CLEAN CUTTING OF STAINLESS STEEL, MILD STEEL, BRASS & ALUMINIUM

- COMPLEX HOLE PATTERNS PROCESSED



## **CNC PUNCHING**

- HIGH SPEED CNC PUNCHING
- COST EFFECTIVE FOR LARGE PRODUCTION RUNS
- QUICK SET-UP & FAST HIT RATES



- EDGE QUALITY, DIMENSIONAL ACCURACY ASSURED
- DYNAMIC NESTING FOR OPTIMUM SHEET YIELD
- EXTENSIVE TOOLING LIBRARY



## **PRECISION SHEET METAL WORK**

- SINGLE ITEMS TO PRODUCTION QUANTITY VOLUMES
- PROTOTYPES AND COMPLEX FORMS
- FULL DESIGN & DEVELOPMENT SERVICE
- CNC PRESSBRAKING



- MIG, TIG & SPOTWELDING
- FULL METAL FINISHING SERVICES AVAILABLE
- 3D DESIGN SERVICES

## **IN HOUSE PRODUCTION**

LASER CUTTING  
TUBULAR LASER CUTTING  
CNC PUNCHING  
PRECISION SHEET METAL WORK  
CNC PRESSBRAKING  
MIG WELDING  
TIG WELDING  
SPOT WELDING  
DRILLING & TAPPING  
INSERTING & BUSHING  
FULL CAD / CAM & 3D SOFTWARE FACILITIES  
AUTOMATIC NESTING  
FILE HANDLING IN ALL COMMON FORMATS

## **MATERIALS PROCESSED**

MILD STEELS  
ALUMINIUM  
ALL GRADES OF STAINLESS STEEL  
BRASS  
COPPER

## **SERVICES**

POWDER COATING  
WET SPRAY  
NITRO-TEC FINISHING  
NYLON COATING  
ALL STANDARD PLATING FINISHES  
NATIONWIDE DISTRIBUTION AS REQUIRED

## **GLOBAL SOURCING FROM CHINA ENTERPRISE UK LTD**

CHINESE MANUFACTURING FROM OUR  
SISTER COMPANY:

- PLASTIC INJECTION MOULDING
- SHEETMETAL WORK
- TUBULAR FABRICATION
- METAL TURNING
- TOOLING
- ASSEMBLY WORK
- SOURCING
- ALL COMMUNICATIONS HANDLED BY  
OUR UK OFFICE
- UK STOCKING AGREEMENTS FOR KANBAN  
& JIT DELIVERIES



**CEL HOUSE**  
UNITS C6 & C7  
STAFFORD PARK 11  
TELFORD  
SHROPSHIRE  
TF3 3AY  
T: +44 (0) 1952 200 741  
F: +44 (0) 1952 293 296  
E: sales@cel.uk.net

[www.cel.uk.net](http://www.cel.uk.net)